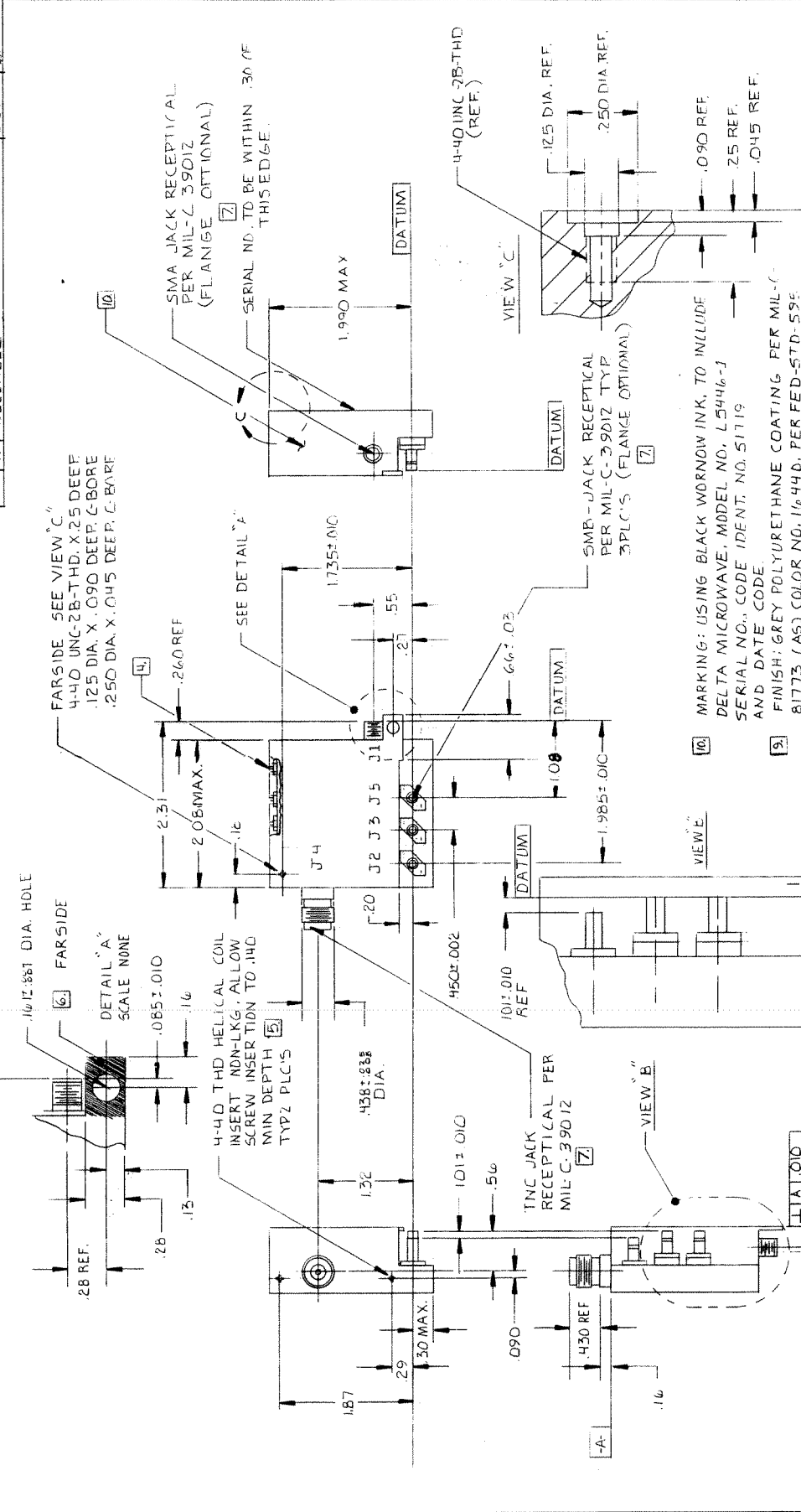


THIS DOCUMENT CONTAINS INFORMATION PROPRIETARY TO DELTA MICROWAVE. ANY REPRODUCTION OF THIS DOCUMENT WITHOUT WRITING PERMISSION IS EXPRESSLY PROHIBITED.

ZONE	LTR	DESCRIPTION	DATE	APPROVED
A		RELEASED	2-28-86	



<b>DELTA MICROWAVE</b> <small>840 VIA ALONDRA          CAMARILLO, CALIFORNIA 93010</small>		<b>OUTLINE          DIPLEXER</b>	
UNLESS OTHERWISE SPECIFIED DIMENSIONS ARE IN INCHES FRACTIONS DECIMALS ANGLES XX ± .05 ± NA .XX ± .010		CONTRACT NO. APPROVALS DRAWN D.L. JONES CHECKED [Signature] DATE 2-26-86	
QTY RECD IDENT		PART OR IDENTIFYING NO. Nomenclature or Description	
PARTS LIST		SIZE CODE IDENT NO. DRAWING NO. <b>C 51719 L5446-1</b>	
DO NOT SCALE DRAWING		SCALE FULL 1	
FINISH UNCOATED SURFACE OF METAL TAPES		SHEET OF 1	

6. SEALING COAT INCLUDED IN DIMENSIONS THREAD AND CONDUCTOR AREA OF CONNECTORS TO BE FREE OF SEAL COATING.
  7. AREA INDICATED TO BE FREE OF A SEAL COATING TAPPED HOLES ARE BLIND HOLES OR SEAL WITH EPOCAST 8290 (WITH HARDENER 9810) OR EQUIV.
  8. FIVE TUNING SCREWS WITH LOCK NUTS SHALL BE LOCATED WHERE SHOWN. LOCK NUTS MUST BE RECESSED BELOW SURFACE. ADJUSTING SCREWS MAY EXTEND BEYOND SURFACE AFTER TUNING.
  9. ADJUSTING SCREWS MUST BE CUT FLUSH OR BELOW SURFACE.
  10. UNIT WEIGHT : 5 OZ MAX
  11. ALL CONNECTORS TO BE PASSIVATED STAINLESS STEEL
  12. INTERPRET DRAWING IN ACCORDANCE WITH MIL-STD-100
- NOTES

GROUP 1 AND 2 MICROCOPIERS